

Bob's Software



DISKSPACE - INTRODUCTION

May 24, 1993

Dear Computer User:

Thank you for trying DiskSpace. DiskSpace is being distributed as Shareware. It is my hope that you find DiskSpace useful, and that you register your copy of the program. I firmly believe in the Shareware concept. All of my Shareware releases are fully functioning versions of the programs, not crippled demos. Some of the programs do contain reminder screens. These screens are there just to remind you that the program is Shareware and that use beyond the evaluation period requires that you register with me, the author. For DiskSpace, registration entitles you to a copy of the program without the reminder, and a copy of FloppySpace.

The purpose of this help file is to provide you the information necessary for you to make full use of this program. Please review the information contained in this file to familiarize yourself with the features of DiskSpace.

I hope that you find this program useful, and that you register. Please go through the rest of this on-line document to find out more about this program, and the other programs available from Bob's Software. If you have any questions or comments, please do not hesitate to contact me.

Sincerely,



Bob Hayes



DISKSPACE HELP - TABLE OF CONTENTS

[Program and Version Information](#) - installation, features ...

[DiskSpace's Main Window](#)

[DiskSpace's Menu](#)

[Other Programs from Bob's Software](#)

[How to Disable that Annoying Shareware Reminder](#)

[Registration Information](#)



PROGRAM AND VERSION INFORMATION

[Program Overview and Features](#)

[File List](#)

[Installation](#)

[De-Installation](#)

[DSW.INI](#)

[Known Bugs and Limitations](#)

[Copyright Notice and Disclaimers](#)

[License Agreement](#)

[Registration Information](#)



PROGRAM OVERVIEW AND FEATURES

Program Name: **DiskSpace**

Current Version: **0.5**

Release Date: **May 24, 1993**

Archive/BBS file name: **DSW050.(ZIP,ARC,LHA...)**

DiskSpace is a program for the Microsoft® Windows™ operating system that will allow you to easily monitor the amount of free space on your computer's hard disks. DiskSpace's window displays the number of bytes free and graphically shows the percent of the disk's space allocated. DiskSpace will work with up to 10 logical local drives, and with any size drive. DiskSpace updates every second, but redraws the bars only if the amount of free space has changed. When minimized, the bars still display the percent of free disk space.

FEATURES

Drive Selection - command line and dialog box

Always on Top

Saving of Screen Position



DRIVE SELECTION

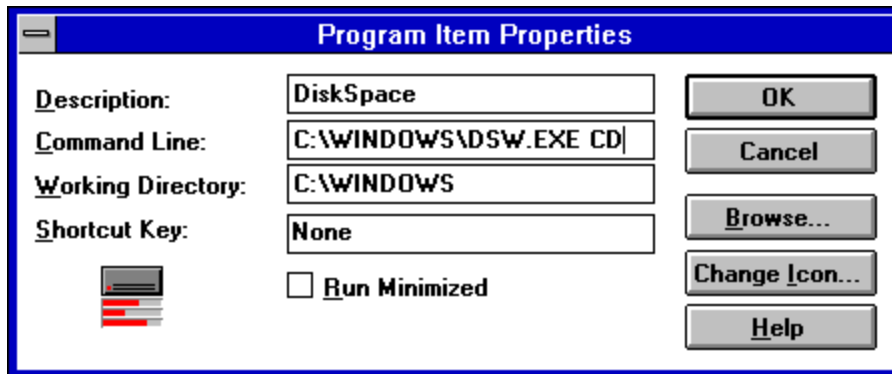
DiskSpace provides two ways for you to specify which drives to display:

1. the "Select Drives..." menu item, and
2. by using a command line parameter.



COMMAND LINE

You can specify the drives that you want DiskSpace to display by using a command line parameter. The parameter is entered after "DSW.EXE" in the "Command Line" entry in the program manager "Run" dialog box of the "Program Item Properties" dialog box. The drive letters are entered as capital letters. Be sure to leave a space between DSW.EXE and the drive letters, but no spaces between the drive letters themselves. Here is an example of the "Program Item Properties" dialog box with a command line that displays information for the C and D drives only.



NOTE: Settings are not saved when you specify a command line. This way you can have multiple entries for DiskSpace in program manager for different drives without altering your settings for DiskSpace when a parameter is not specified.

If the drives specified on the command line do not exist, the number of bytes free will display -1.



FILE LIST

The following files are included with DiskSpace:

DSW.EXE
DSW.HLP
DSW.DOC
FILE_ID.DIZ
DESC.SDI
VENDOR.DOC

Other files, BBS/disk vendor advertising, etc., may have been added, but the all of the above files should be there.

DSW.DOC

This is a text file containing basic information about DiskSpace.

FILE_ID.DIZ

This is a description file used by some BBSs.

DESC.SDI

This is a description file used by some BBSs.

VENDOR.DOC

This is a text file that contains information for Shareware distributors and disk vendors. The same information can be found in the Vendor Information section of this online document.



INSTALLATION

DiskSpace is very easy to install. Copy the files DSW.EXE and DSW.HLP to any directory on your hard disk. Be sure to copy both files into the same directory. After copying the files, add DiskSpace to a Program Manager Group. You may want to place DiskSpace in your StartUp group so that it will run each time that you start Windows™. That is all there is to it.

DSW.EXE

This file contains the DiskSpace program.

DSW.HLP

This is this help file.

StartUp Group

The StartUp group contains applications that start when you start Windows™.



DE-INSTALLATION - REMOVING DISKSPACE FROM YOUR SYSTEM

If during, or at the end of, the evaluation period you decide that you do not wish to register DiskSpace, you must remove it from your computer. To remove DiskSpace do the following:

1. Make sure that DiskSpace is not running.
2. Remove any Program Manager entries you made for DiskSpace.
3. Delete the following files: DSW.EXE, DSW.HLP, and DSW.INI.

DiskSpace does not make any entries in your WIN.INI or SYSTEM.INI files.

Evaluation Period

The evaluation period is the time that you can try the program without registering with the author. The evaluation period for DiskSpace is 30 Earth days.



DSW.INI

DSW.INI is the private initialization file for DiskSpace. This file lives in your Windows™ directory. DiskSpace uses this file to save your settings from session to session. Your DSW.INI should look something like this:

```
[DiskSpace]  
SelDriveList=DE  
AllwaysOnTop=1  
X=586  
Y=523
```

If this file is deleted, your settings will be lost and default settings will be used. The file will be recreated when you close DiskSpace or when you select "Save Settings" from DiskSpace's menu.

[DiskSpace]

The name of the program.

SelDriveList=DE

This is a list of the drives that have been selected to be displayed. In this example they are drives D and E.

AllwaysOnTop=1

This entry saves the state of the "Always On Top" menu item. A "1" indicates that "Always on Top" is checked. A "0" would mean that it is unchecked.

x=586

This entry saves the horizontal position of the DiskSpace window in screen coordinates. In this example that number is 586.

Y=523

This entry saves the vertical position of the DiskSpace window in screen coordinates. In this example that number is 523.



KNOWN BUGS AND LIMITATIONS

-DiskSpace will only work if there are 10 or fewer logical drives on your system.

-It is not recommended that you use DiskSpace on floppy drives. When you register DiskSpace you will be sent a copy of FloppySpace, a program specifically designed for monitoring floppy drives.

-DiskSpace does not monitor network drives.

-Settings are not saved to DSW.INI when you close Windows™ while DiskSpace is still open. To save your settings, close DiskSpace or select "Save Settings" from DiskSpace's menu.



COPYRIGHT NOTICE

DiskSpace Copyright © 1991-1993 Robert Hayes - All rights reserved.

DISCLAIMER/WARRANTY

DiskSpace is provided AS IS without any warranty, expressed or implied, including, without limitation, implied warranties of merchantability and fitness for a particular purpose. Any use by you of the software is at your own risk. In no event shall the author be liable for any damages whatsoever (including, without limitation, damages for loss of business profits, business interruption, loss of business information, or other pecuniary loss) arising out of the use or inability to use this product.

TRADEMARKS

Windows is a trademark of Microsoft Corporation.
Any other product names mentioned are probably trademarks or registered trademarks of their respective holders.



LICENSE AGREEMENT

This copyrighted program is being distributed as Shareware. You may try this program for 30 days, and if you like it, or find it useful, and wish to continue using it, you are expected to register with the author. You are free (and encouraged) to copy this program and distribute it to anyone, as long as no fee, other than a nominal fee for the disk and shipping/handling, is charged for the program, and as long as all of the files listed in the File List section of this on-line documentation accompany the program.

Shareware disk vendors - Please read the Vendor Information section.



DISKSPACE'S MAIN WINDOW



The DiskSpace window displays a bar for each of the selected drives. The **RED** part of the bar represents the percent of that disk's space that is filled.

The drive is identified here by the drive letter.

The number of bytes available on the drive.




MINIMIZED DISKSPACE WINDOW

The minimized DiskSpace window will display a bar showing the percent allocated for each of the selected drives.





DISKSPACE'S MENU

DiskSpace's Menu is attach to the system menu. Click on the system icon  and the menu will appear. The menu has the following options.

- Restore
- Move
- Minimize
- Close
- Switch To...
- Always on Top
- Save Settings
- Select Drives...
- Help
- About...

ABOUT...

Selecting this menu item displays the DiskSpace "About" dialog box which contains the version number, release date, and copyright notice.

HELP

Selecting this menu item causes DiskSpace to have the Windows™ Help system to display this online document.

RESTORE

Returns the window to its previous, non-iconic, size.

MOVE

Selecting this menu item will allow you to use the keyboard to move the window to another position.

MINIMIZE

Selecting this menu item will reduce the window to an icon. Refer to [the minimized DiskSpace window](#), for more information.

CLOSE

Selecting this menu item will close DiskSpace.

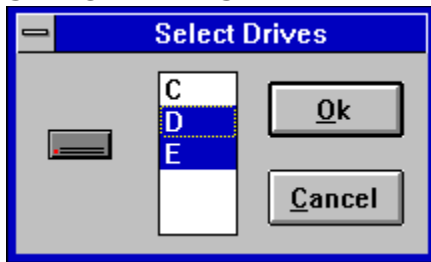
SWITCH TO...

Selecting this menu item will open the Windows™ Task List, which enables you to switch between running applications and rearrange windows and icons on your desktop.

ALWAYS ON TOP

When this menu item is checked, DiskSpace will display on top of other windows, even when DiskSpace is inactive. The check status of this menu is saved when you exit the program. This feature is useful when you want to monitor an installation process that takes over the entire screen.

SELECT DRIVES



This menu item opens the "Select Drives" dialog box. The list box will contain the letters of each non-removable drive on your system. The currently selected drives will be highlighted. Select or deselect the drives that you want displayed and press "OK". DiskSpace's window will resize to show all of the selected drives. If all of the drives are deselected, all drives will be selected.

SAVE SETTINGS

This menu item saves the current settings (the screen position, which drives are selected, and whether or not "Always On Top" is checked) in the DSW.INI file.



HOW TO DISABLE THAT ANNOYING SHAREWARE REMINDER

REGISTER!



REGISTRATION INFORMATION

[How Do I Register?](#)

[Benefits of Registration](#)

[Registration Form](#)

[What is Shareware?](#)

[Vendor Information](#)



HOW DO I REGISTER?

To register DiskSpace send me:

1. your name,
2. your address,
3. the program's name and version number,
4. where you got the program,
5. your disk preference (5.25 or 3.5), and
6. a check or money order for \$7 US (this includes \$1 for shipping and handling).

If you are registering from Canada or Mexico, please add \$1, overseas registrations please add \$2.

Please pay in US dollars. If you send a check, be sure that it is drawn on a US bank, or use an international postal money order that can be cashed at a US post office.

Make checks and money orders payable to Bob Hayes.

To make it easier for you, I have included a [registration form](#) as part of this help file. To print that form, make it the current topic, and select "Print Topic" from WinHelp's "File" menu.

Send it to:

Bob Hayes
Bob's Software
10104 Blue Tee Terrace
Gaithersburg, MD 20879

After I receive the above, I will send you a disk containing a personalized version of the program, without the "Annoying Shareware Reminder" and a copy of [FloppySpace](#).



BENEFITS OF REGISTRATION

All registered users will receive the following:

1. A disk containing a personalized copy of the program without the "reminder".
2. A copy of FloppySpace.
4. A smaller EXE and HLP file.
3. A clear conscience.



FLOPPYSPACE



FloppySpace displays the same information as DiskSpace, but it was written specifically for removable drives. FloppySpace is only available by registering DiskSpace.

REGISTRATION FORM FOR DISKSPACE

NAME: _____
ADDRESS: _____

CITY: _____
STATE: _____
ZIP: _____
COUNTRY: _____

VERSION NUMBER: _____

WHERE DID YOU GET THE PROGRAM? _____

WHAT SIZE DISK DO YOU WANT? 5.25 3.5

COMMENTS OR SUGGESTIONS: _____

PLEASE SEND THIS FORM AND A CHECK OR MONEY ORDER FOR \$7 TO:

BOB HAYES
BOB'S SOFTWARE
10104 BLUE TEE TERRACE
GAITHERSBURG, MD 20879

If you are registering from Canada or Mexico, please add \$1, overseas registrations please add \$2.

Please pay in US dollars. If you send a check, be sure that it is drawn on a US bank, or use an international postal money order that can be cashed at a US post office.



WHAT IS SHAREWARE?

Shareware is a distribution method that gives users a chance to try software before buying it. If you try a Shareware program and continue using it, you are expected to register. Individual programs differ on details some request registration while others require it, some specify a maximum trial period. With registration, you get anything from the simple right to continue using the software to an updated program with printed manual.

Copyright laws apply to both Shareware and commercial software, and the copyright holder retains all rights, with a few specific exceptions as stated below. Shareware authors are accomplished programmers, just like commercial authors, and the programs are of comparable quality. (In both cases, there are good programs and bad ones!) The main difference is the method of distribution. The author specifically grants the right to copy and distribute the software, either to all and sundry or to a specific group. For example, some authors require written permission before a commercial disk vendor may copy their Shareware.

Shareware is a distribution method, not a type of software. You should find software that suits your needs and pocketbook, whether it's commercial or Shareware. The Shareware system makes fitting your needs easier, because you can try before you buy. And because the overhead is low, prices are low also. Shareware has the ultimate moneyback guarantee if you don't use the product, you don't pay for it.



VENDOR INFORMATION

This section contains Bob's Software's commercial distribution policy. The same information appears in the file VENDOR.DOC.

Shareware distributors and disk vendors are permitted to redistribute this software subject to the conditions found in the program's license agreement. It is requested that Shareware distributors and disk vendors send a copy of the first catalog, print or electronic, that this program is listed in to Bob's Software. It is also requested that Shareware distributors and disk vendors inform Bob's Software that they are distributing this program so that they can receive other products and program updates.

Shareware distributors and disk vendors should stress the Shareware concept.

This policy may change at any time.

Please contact Bob's Software if you have any questions.

Bob's Software

OTHER PROGRAMS FROM BOB'S SOFTWARE

[Bob's CD Player](#)
[DiskInsert](#)
[Mouse Cursor Editor](#)
[PSPrint](#)
[PC-Piano](#)
[CHKM \(Check Mouse\)](#)
[PCX2TPI](#)

[Program Availability](#)
[Coming Soon](#)
[Do You Have a Good Idea for a Program?](#)
[Programming Services](#)
[Contacting Bob's Software](#)

BOB'S CD PLAYER



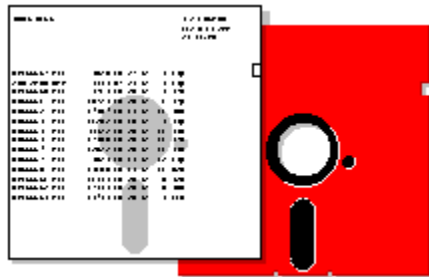
Current version: **1.0**

Archive name: **BCDP10.ZIP**

Registration Fee: **\$10.00**

Bob's CD Player (BCDP) is a program for the Windows™ operating system that will enable you to control your computer's CD-ROM drive when playing audio compact discs. BCDP provides familiar tape deck style controls for your CD-ROM drive. BCDP's window is small and unobtrusive, with the look of an audio component from your stereo. This program takes full advantage of the Windows™ interface, allowing you access to its features with a pointing device or the keyboard. The program includes online help.

DISKINSERT



Current version: **0.3**

Archive name: **DI03.ZIP**

Registration Fee: **\$5.00**

DiskInsert v.0.3, DiskInsert will print the directory of a diskette, using a PostScript printer, so that it can be placed in the sleeve with the disk. Requires a PostScript printer and EGA compatible graphics. A mouse is supported, but not required.

MOUSE CURSOR EDITOR



Current version: **1.0**

Archive name: **MCEDIT10.ZIP** (MCED10.ZIP on CompuServe)

Registration Fee: **\$5.00**

Mouse Cursor EDITor is a programming tool that will enable developers to graphically create mouse cursors. If you have ever manually coded the screen and cursor masks for a mouse cursor you will appreciate this program. Mouse Cursor EDITor will work with all languages. Requires a mouse and EGA compatible graphics. Includes a demo with source and a TP5 mouse unit.

PSPRINT

*** .TXT**  **PostScript**

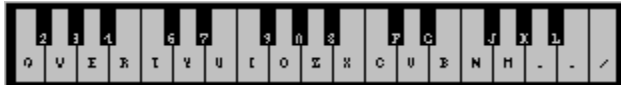
Current version: **2.4**

Archive name: **PSP24.ZIP**

Registration Fee: **\$5.00**

PSPrint will print a text file to a PostScript printer from the DOS command line. Each page is printed with a header containing the file name, the date printed, page number and the total number of pages. Allows font choice and will print up to 220 lines per page. Requires a PostScript printer.

PC-PIANO



Current version: **1.1**

Archive name: **PC-PIANO.ZIP**

Registration Fee: **none**

PCPIANO Version 1.1 is a fun little program to play simple tunes on you computer.

CHKM



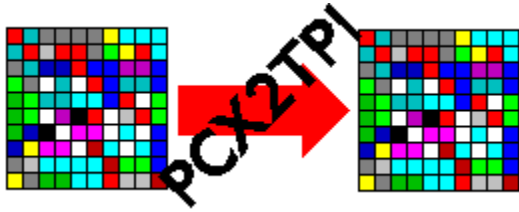
Current version: **1.1**

Archive name: **CHKM11.ZIP**

Registration Fee: **none**

CHKM (Check Mouse) Version: 1.1 CHKM, is a small, free utility that checks the status of the mouse driver and mouse. The program will tell you if a mouse driver is installed, the mouse driver version, the mouse type, the IRQ used by the mouse, and the number of buttons.

PCX2TPI



Current version: **2.0**

Archive name: **PCXTPI.ZIP**

Registration Fee: **\$5.00**

PCX2TPI is a programmers tool to convert 16-color PCX images into a format that can be linked into a Turbo Pascal program and displayed with the PutImage() procedure. Includes an example program with source code. Requires Turbo Pascal and BINOBJ.EXE.

PROGRAM AVAILABILITY

Programs from Bob's Software are available from a number of sources, including many BBSs in the Washington DC area, some national BBSs, CompuServe and America Online.

If you are a Disk Vendor or a BBS operator and would like to distribute programs from Bob's Software, please contact me. Also, read the Vendor Information section of this document.

All of the programs listed in this on-line document are available directly from Bob's Software. You may order registered versions of any of the software listed, or you may order a disk containing the Shareware (non-registered) versions of all of the programs for just \$5.00. To make it easy, just print and use the convenient order form included in this file.

BOB'S SOFTWARE ORDER FORM (DSW 5-15-93)

NAME: _____

ADDRESS: _____

CITY: _____ STATE: _____ ZIP: _____

EMAIL ADDRESS: _____

PREFERRED DISK SIZE: 3.5 5.25

REGISTERED VERSIONS:

PRICE	PROGRAM NAME	QUANTITY	\$AMOUNT
\$10	BOB'S CD PLAYER	_____	_____
\$6	DISKSPACE	_____	_____
\$5	DISKINSERT	_____	_____
\$5	PSPRINT	_____	_____
\$5	MOUSE CURSOR EDITOR	_____	_____

SHAREWARE DISK - THIS DISK CONTAINS UNREGISTERED VERSIONS OF ALL OF BOB'S SOFTWARE'S CURRENT RELEASES.

\$5	SHAREWARE DISK	_____	_____
-----	----------------	-------	-------

SUB-TOTAL _____

SHIPPING AND HANDLING
 FOR SHIPMENTS IN THE US ADD \$1,
 FOR CANADA AND MEXICO ADD \$2,
 AND FOR OVERSEAS PLEASE ADD \$3 _____

TOTAL ----> ----> ----> ----> ----> ----> ----> ----> _____

PLEASE SEND THIS FORM AND A CHECK OR MONEY ORDER, PAYABLE TO BOB HAYES, IN US DOLLARS, DRAWN ON A US BANK, OR AN INTERNATIONAL POSTAL MONEY ORDER THAT CAN BE CASHED AT A US POST OFFICE, FOR THE AMOUNT INDICATED AS THE TOTAL TO:

BOB HAYES
 BOB'S SOFTWARE
 10104 BLUE TEE TERRACE
 GAITHERSBURG, MD 20879

THANK YOU.

CONTACTING BOB'S SOFTWARE

I would like to hear from you, your comments and suggestions are important to me. If you need to contact me, please send all correspondence to:

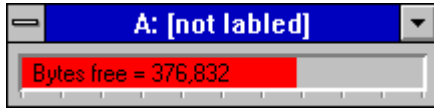
Bob Hayes
Bob's Software
10104 Blue Tee Terrace
Gaithersburg, MD 20879

Or you can also reach me on CompuServe @ 71224,3202.

COMING SOON FROM BOB'S SOFTWARE

The following projects are in the works:

DiskInsert Version W - this is a version of DiskInsert for the Windows



operating system, and as such will take full advantage of the Windows



environment, including support for a pile of printers. Other features of this program will be the ability to print disk labels, sorting of files, the inclusion of sub-directories, and the listing of files in zipped files.

PSPrint v3.0 - A new version of PSPrint that will have an interactive mode for the selection of formatting options.



BOING! - will be a an application for the Windows operating system to play WAV files. BOING! will be an icon that will sit on your desktop and when clicked, play an assigned WAV file.

DO YOU HAVE A GOOD IDEA FOR A PROGRAM?

Is there a program in your head that you think the world should not do without? If you have a good idea for a program, I would be interested in hearing from you. Please [contact me](#) and we can discuss your ideas and we will see what we can do.

PROGRAMMING SERVICES

Shareware registrations don't pay the mortgage, they won't even buy me a 486.

I am available on a contract basis to provide custom programming services. Services include:



Windows - Based Applications
DOS Applications (text and/or graphic)
PostScript Programming
Demos
Animations
On-line Documents

If there is a task that you do over and over again, and you think that there has to be a better way, maybe there is, maybe you need some custom software. Contact me and we can talk about developing a better way. It probably costs less than you think.

